





# Personal Growth. Global Impact. *Feed the Roots.*

Mick Schwedler, P.E., LEED AP  
2021-2022 ASHRAE Society President







**1894**

**1894**





*"...members will have the **opportunity of forming acquaintances, exchanging theories and experiences** and through these associations promulgate a feeling of perfect freedom in **consulting one another** when in doubt on a subject..."*

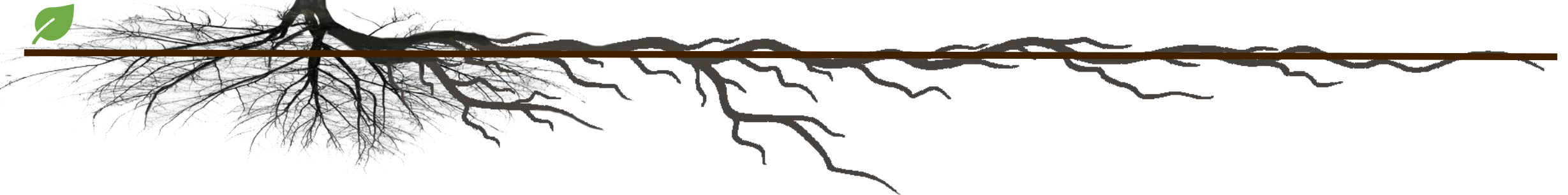
(From Heating and Ventilation, October 15 and November 15, 1894)

**Charter Member Harrie Crane of Cincinnati, Ohio**

**1894**

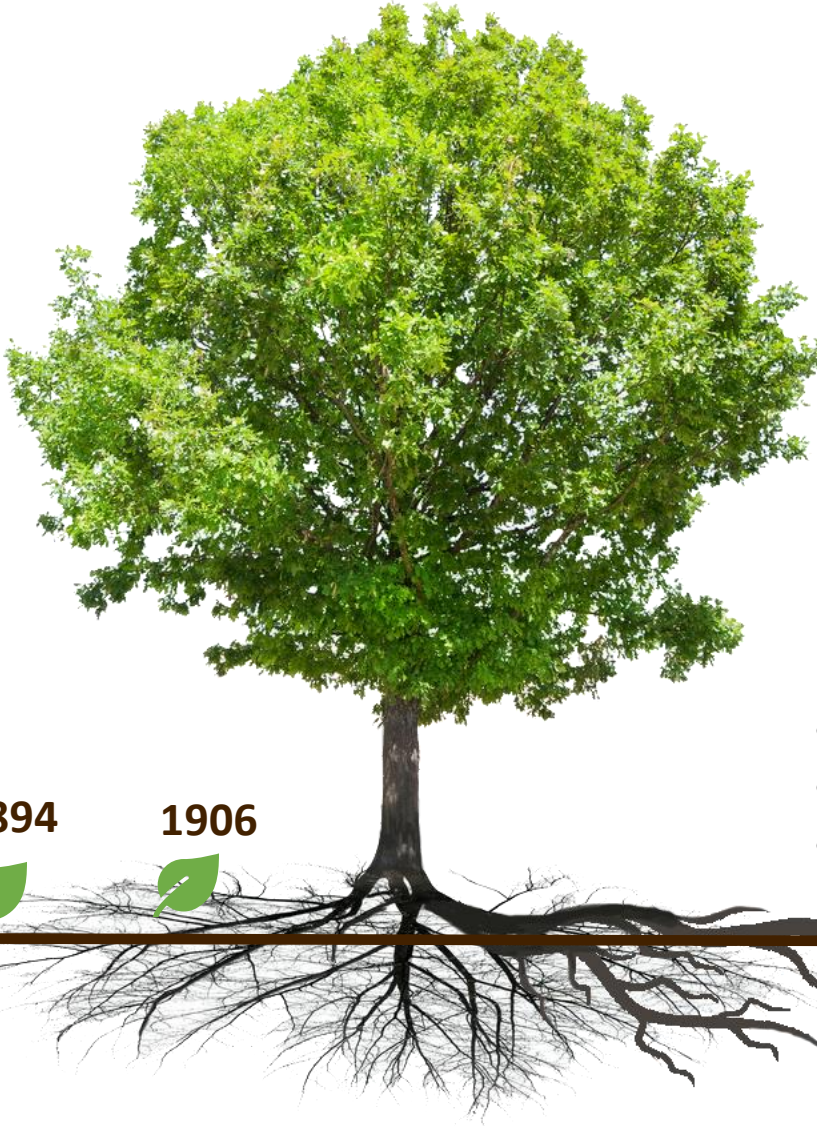


**Member-to-Member Connections**





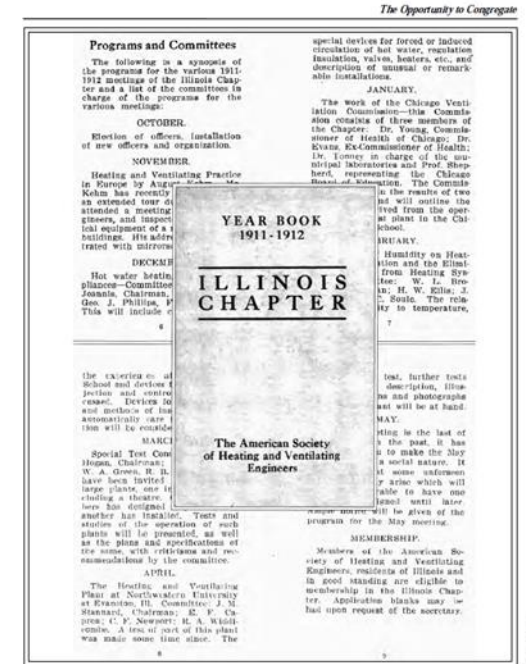
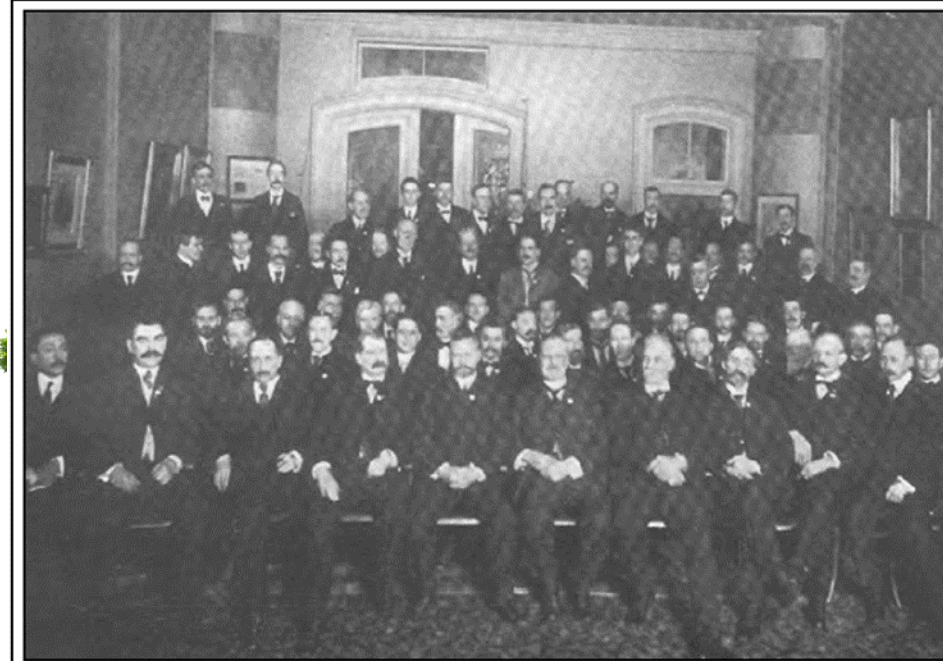
# 1906: Root Two – Chapters (Grassroots)



1894

1906

- Forming acquaintances
- Sharing experiences and theories
- Consulting one another



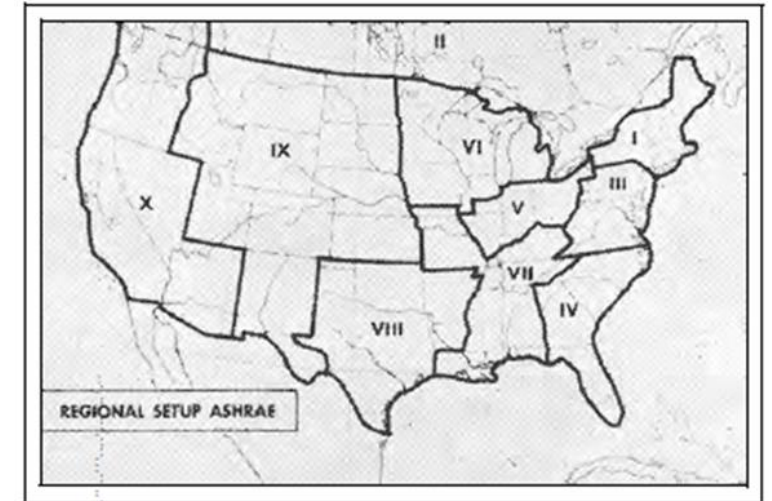


# 1922 – 1956: Growth in North America

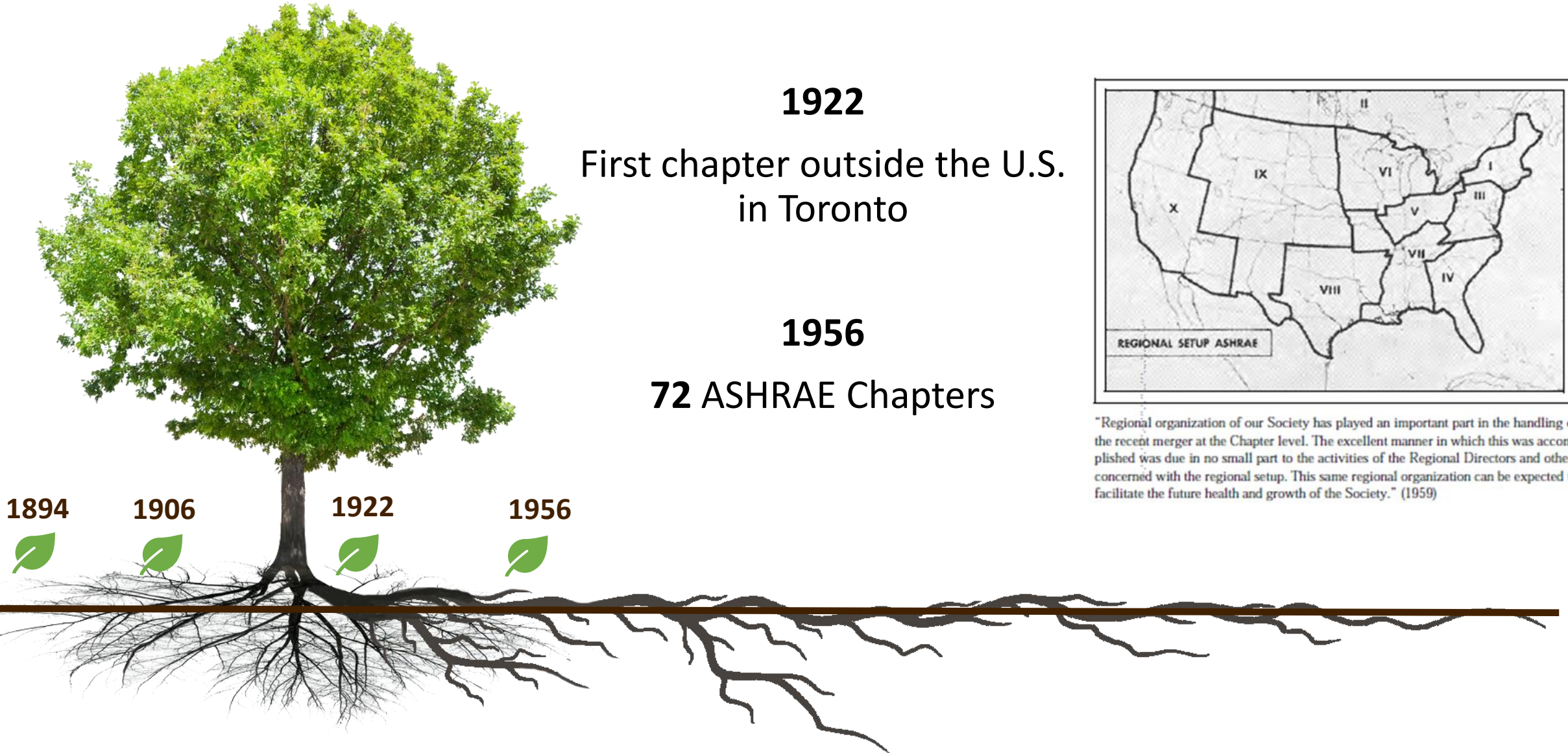


**1922**  
First chapter outside the U.S.  
in Toronto

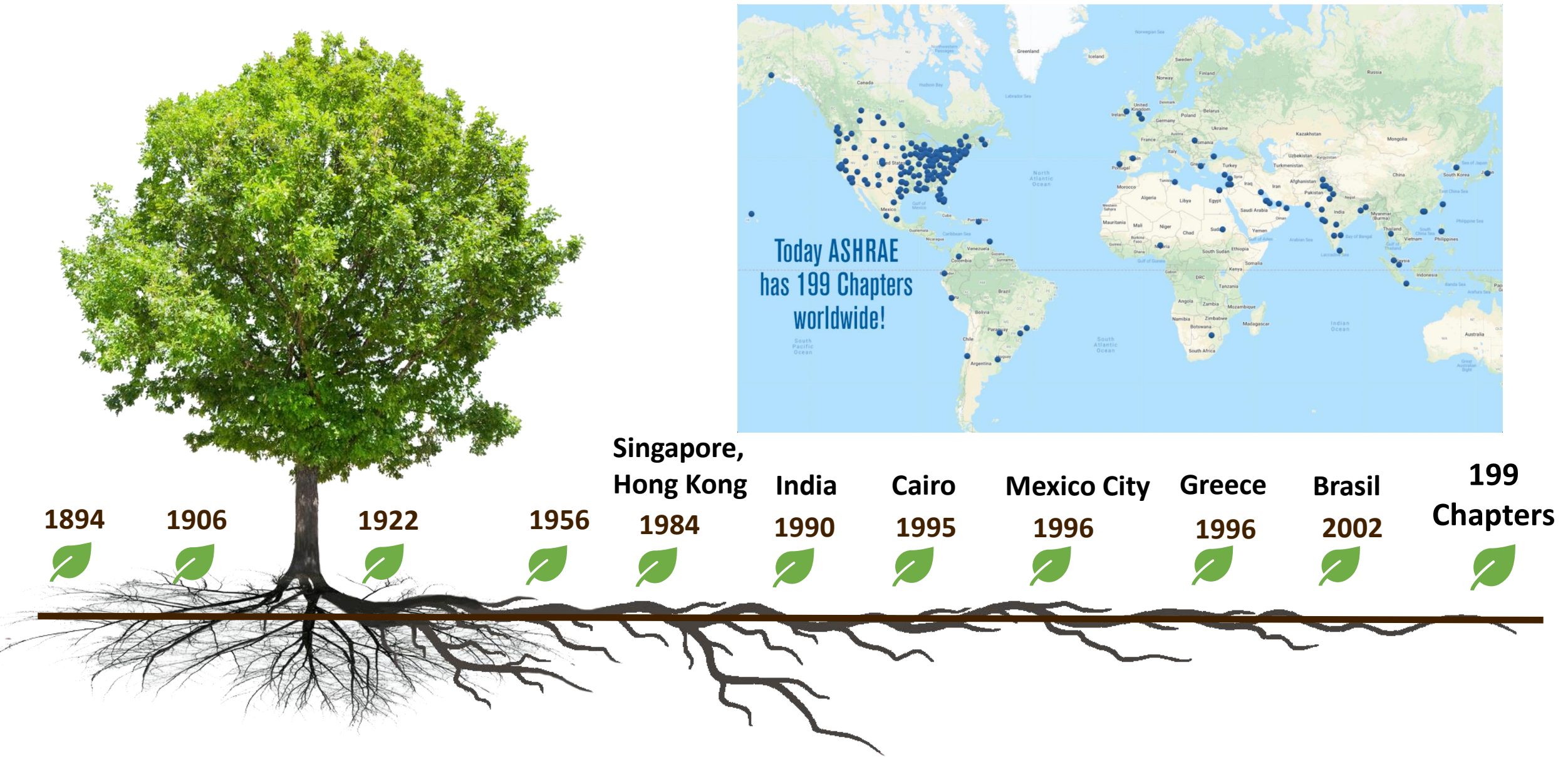
**1956**  
**72** ASHRAE Chapters



"Regional organization of our Society has played an important part in the handling of the recent merger at the Chapter level. The excellent manner in which this was accomplished was due in no small part to the activities of the Regional Directors and others concerned with the regional setup. This same regional organization can be expected to facilitate the future health and growth of the Society." (1959)



# 1984: ASHRAE Global Growth Commences





# Who Fed Your Roots?

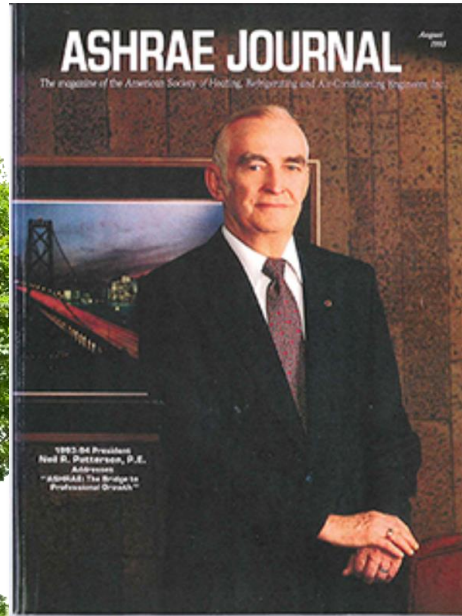


Your list  
*2-3 first names*





# Who Fed My Roots?



**1981: Neil Patterson**



**Charlie Culp**



**Mike Brambley**

**Connect a Colleague today**  
[ashrae.org/connect](https://ashrae.org/connect)



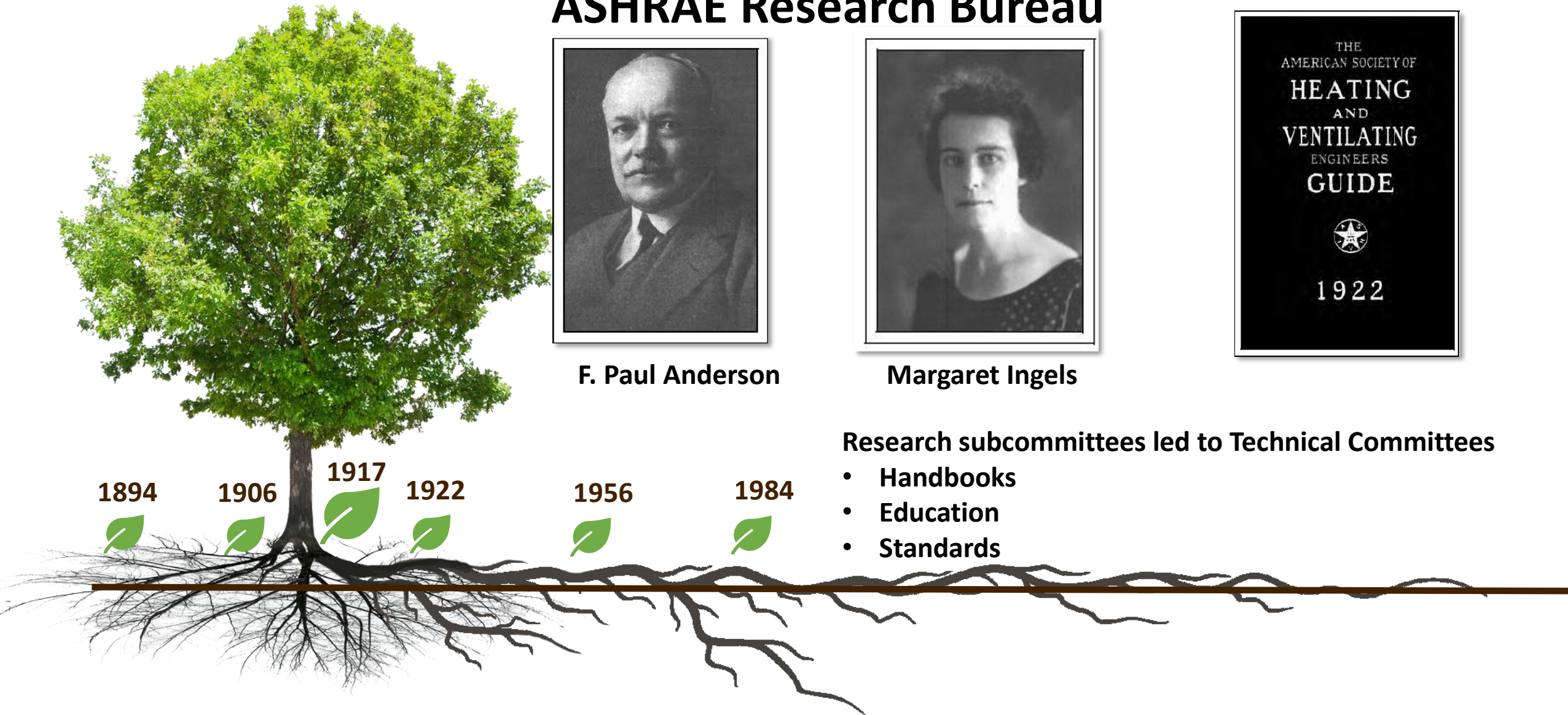
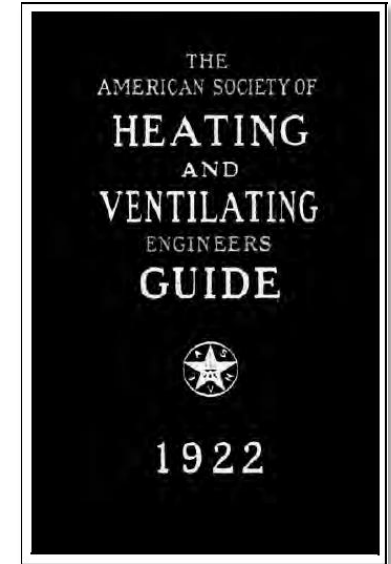
## ASHRAE Research Bureau




F. Paul Anderson



Margaret Ingels







**Personal Growth  
+  
United Efforts**



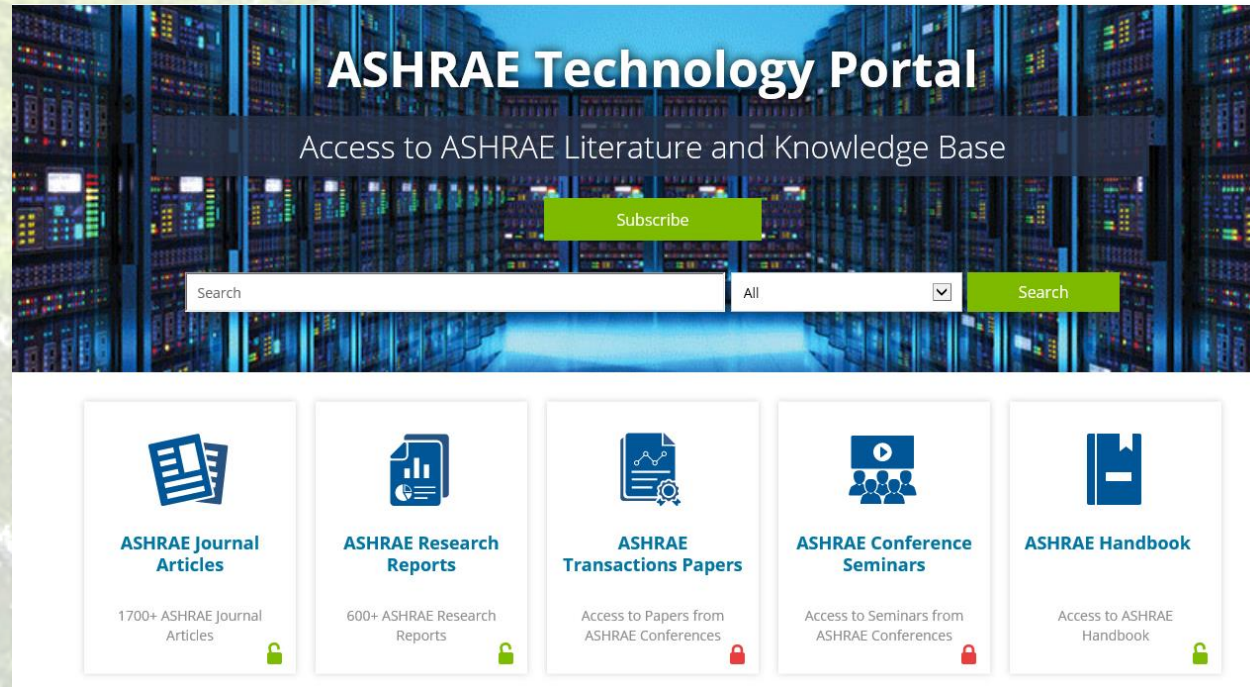
**Global Impact**



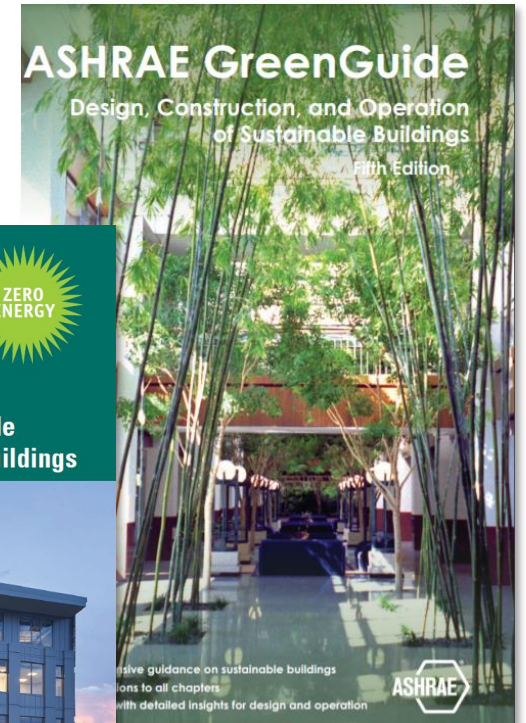
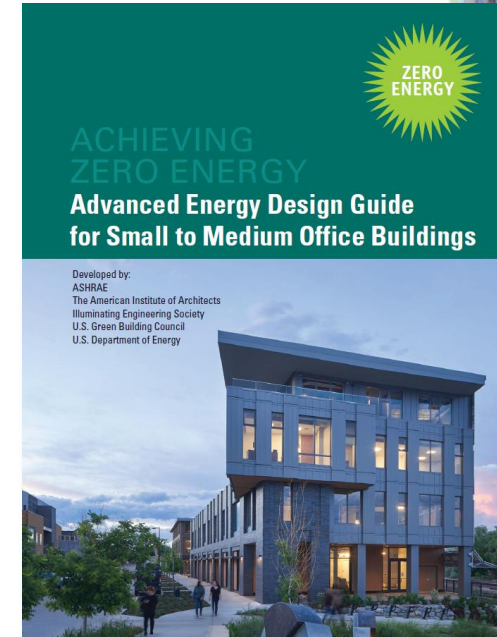
*...to serve humanity*



# Global Impact: Education and Training



[technologyportal.ashrae.org](https://technologyportal.ashrae.org)





**Over \$78,000,000 donated  
since 1959**

**Society Year 2019-2020 total raised: \$2,117,677**

- **\$1,635,596** in contributions for Research
- **\$277,720** for ASHRAE Foundation
- **\$170,596** for Scholarships
- **\$33,765** for General Fund, YEA, and Education



**ASHRAE Cincinnati Chapter RP**

# Global Impact: Young Engineers in ASHRAE (YEA)



- **Members 35 and younger**
- **~20% of membership**
- **Now leading us into the future**



# Global Impact: Epidemic Task Force



- Mitigate the spread of disease
- Information to reopen buildings
- Educate building owners and operators

[ashrae.org/covid19](https://ashrae.org/covid19)

The screenshot shows the ASHRAE COVID-19 response resources webpage. At the top, a banner features a green virus particle and the text "CORONAVIRUS (COVID-19) RESPONSE RESOURCES FROM ASHRAE AND OTHERS". Below the banner, there are social media sharing icons and a "SHARE THIS" button. The main content area includes a "Questions? Email [COVID-19@ashrae.org](mailto:COVID-19@ashrae.org)" link, a "Please support ASHRAE's continuing work to combat the transmission of COVID-19" message, and a "DONATE NOW" button. There are also buttons for "FULL ETF ROSTER" and "FAQ / GLOSSARY". A large infographic titled "ASHRAE EPIDEMIC TASK FORCE - AVAILABLE RESOURCES" is displayed, showing various resources like "BUILDING READINESS", "BUILDING GUIDES", and "ASHRAE RESOURCES". A "FAQ" section with a large "FAQ" text and question marks is also visible. At the bottom, there is a navigation bar with links for "Main", "Reopening", "Buildings", "Filtration/Disinfection", "Transportation", and "Resources". A footer note states: "This page is updated as new information becomes available."



*Jen's ASHRAE Car Magnet*

# 2020-2021: Embrace Technology to Become Fully Digital



**Thank you** to 2020-21 ASHRAE President Chuck Gulledge for his guidance and vision



## Knowledge Portal: The ASHRAE Digital Lighthouse and Industry 4.0

In support of this year's theme, ASHRAE has prepared a comprehensive list of ASHRAE resources to support the 2020-21 Society theme of The ASHRAE Digital Lighthouse and Industry 4.0.

[ENTER THE PORTAL](#)

## Chuck's Presidential Speech

**ASHRAE's Vision For the Future**  
*The ASHRAE Digital Lighthouse and Industry 4.0.*

2020-21 ASHRAE President Chuck Gulledge shares his Leadership Moment

ASHRAE's Vision For the Future: The ASHRAE Digital Lighthouse and Industry 4.0. July 2, 2020





# High Tech / High Touch



**Alvin Toffler, author of “Future Shock.”**





# On to Extraordinary!





## Technical Committees



## Research



## Distinguished Lecturers



## Presidential Award of Excellence (PAOE)

- Streamlined
- Member-to-Member Connections  
IntraRegion and intragenerational events





# Root Two: Chapters and Region (grassroots)



*Together we make ASHRAE Extraordinary*





**NOTHING** happens without you, our volunteers





## Learning Pathways



## Learning Pathways

### Pathway 1: HVAC Design.

- Young professional
- Those new to the industry
- Improve knowledge and ability to serve customers

### Pathway 2: Pathogen Mitigation

- Prepares for future health issues



# Root Two: Grassroots Member-to-Member Connections



**Mick and social media**

## ASHRAE Social Media



@ASHRAE\_Society



@ashraepresident

## Member-to-Member Connections



FRANKLIN D. ROOSEVELT

*32nd President of the United States: 1933 - 1945*

Fireside Chat.



# Whose Roots will you feed in the next three months?



## Your first list

*2-3 first names who  
fed your roots*

## Your list to 'feed the roots'



# Share Your “Feed the Roots” Moments



## 2019: Regions IX and X Joint Chapters Regional Conference



**Heather and David  
Region X**



# Personal Growth. Global Impact.





Today ASHRAE  
has 199 Chapters  
worldwide!

